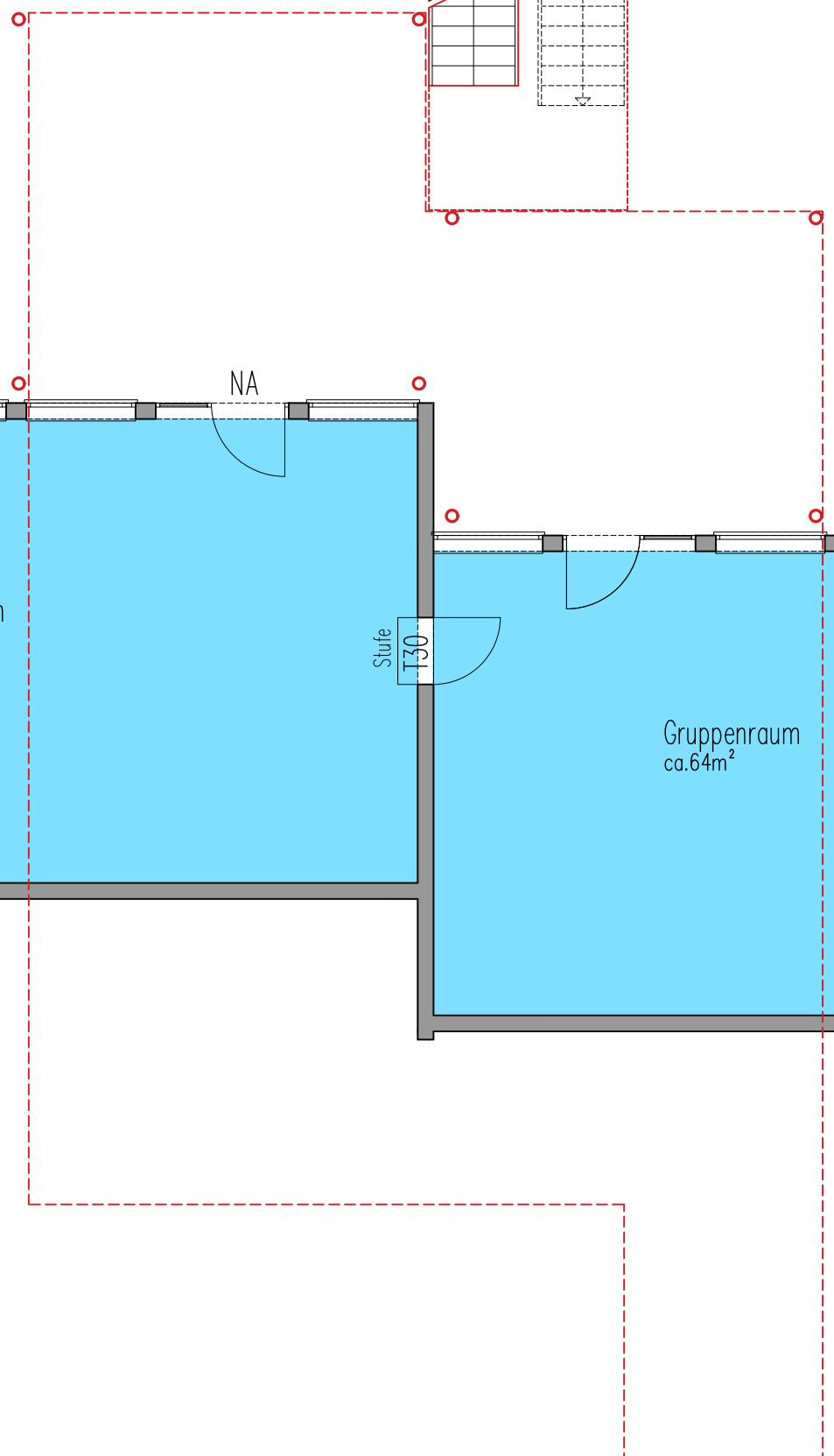
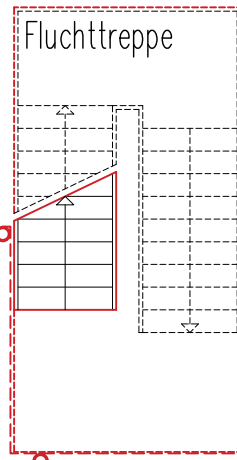


Grundstücksgrenze



Grundschule

Gruppenraum  
ca.85m<sup>2</sup>

Stufe  
T30

Gruppenraum  
ca.64m<sup>2</sup>

NA

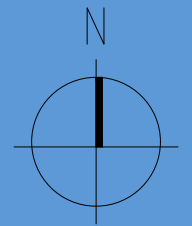
NA

Vorraum

Personalraum/Teeküche  
ca.40m<sup>2</sup>

Hausanschlussraum  
ca.18m<sup>2</sup>

Personal-WC  
ca.10m<sup>2</sup>



GRUNDRISS UG

M 1:100  
Stand 04.06.2020